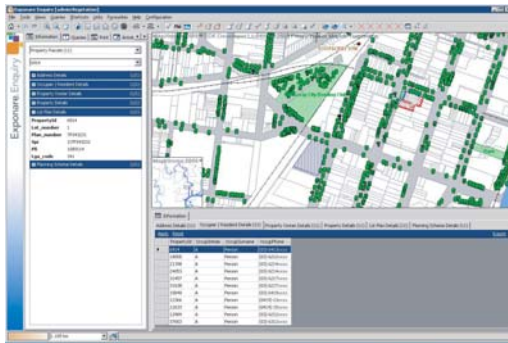




# Exponare and Authority Link Application



## Is Your Council Utilising Civica Authority? Are You Getting The Most From Your GIS?

Lagen Spatial can provide an integrated solution to seamlessly link Exponare to Authority.

### Features of the Exponare and Authority Link Application:

Our team can implement the Generic Link Framework (GLF) to enable Authority and Exponare systems to communicate to each other, allowing the user to efficiently work between systems.

#### Link-ins to Exponare Include:

- Link from Authority to Exponare from Property Enquiry and Maintenance screen.
- Link from Authority to Exponare from Rates Enquiry screen.
- Link from Authority to Exponare from Water Billing Enquiry screen.

#### Link-outs from Exponare Include:

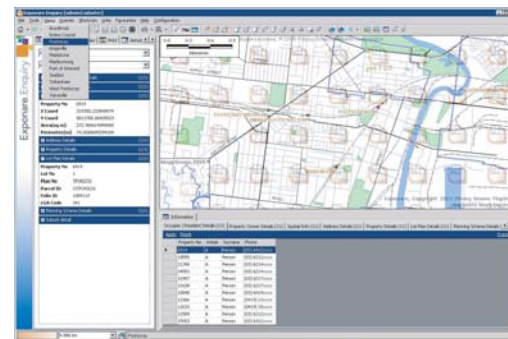
- Link from Exponare to Authority Property Enquiry screen.
- Link from Exponare to Authority Rates Enquiry screen.
- Link from Exponare to Authority Property Master screen.
- Link from Exponare to Authority Customer Service Property Enquiry screen.
- Link from Exponare to Authority Development Enquiry screen.
- Link from Exponare to Authority Certificate Enquiry screen.
- Link from Exponare to Authority Construction Certificate Enquiry screen.
- Link from Exponare to Authority Bulk Update.
- Link from Exponare to Authority Bulk Mail Merge.
- Link from Exponare to Authority Neighbours Mail Merge.



Lagen Spatial can design additional links to those listed above to other screens based on investigation of your system.

#### How Can it Help Your Council?

- Integrates Exponare with other information systems, allowing a one stop shop for information.
- User friendly, quick to install and minimal training required.



**For further information on this exciting new product, packages available and its potential for your council, please contact Lagen Spatial on 1300 725 443, or email [sales@lagenspatial.com.au](mailto:sales@lagenspatial.com.au)**

**Sydney Office (Head Office)**

**Postal Address - PO Box 1474, Cronulla NSW 2230 Australia**

**Address - Suite 2, 1 Kingsway Cronulla, NSW 2230**

**E [info@lagenspatial.com.au](mailto:info@lagenspatial.com.au) | W [www.lagenspatial.com.au](http://www.lagenspatial.com.au)**

**Sydney Office**

**T +61 2 9527 9592 | F +61 2 9527 9590**

**Melbourne Office**

**T +61 3 9225 5267 | F +61 2 9527 9590**

**Brisbane Office**

**T +61 7 3112 2900 | F +61 7 3112 2601**

**Perth Office**

**T +61 8 9388 0418 | F +61 8 6380 1792**